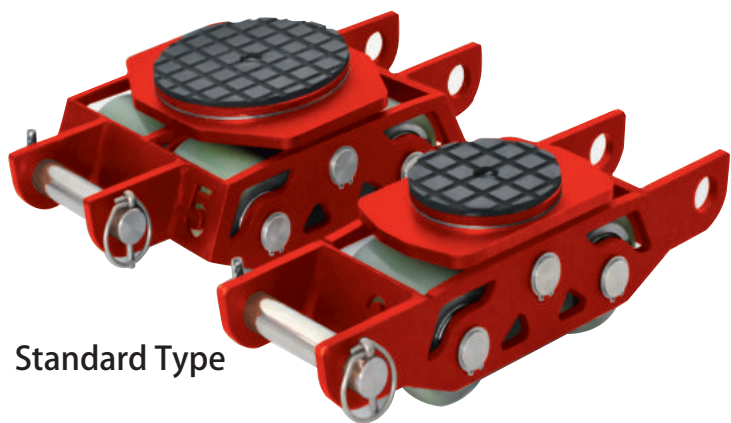


# NEW ROLLER FOR HEAVY LOAD MOVING - SMART DOLLY



Standard Type

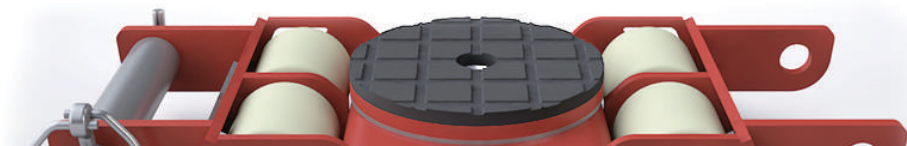


Low-Floor Type

## Improve Safety

## High anti-abrasion rubber made turnable table

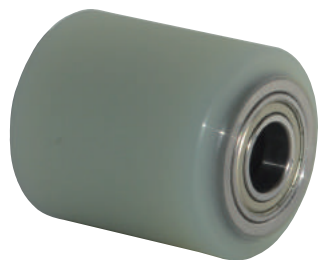
Perfectly fit with the lifting heavy load, the roller is difficult to shift during transportation



## Improve Maintenance

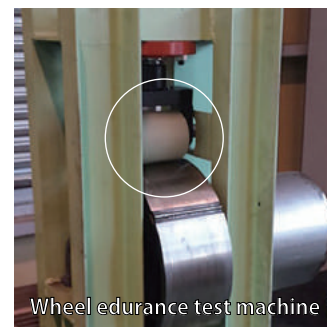
## All the wheels are made from durable urethan rubber

Use only one common wheel design, it can be changed easily



Roller wheel is consumable goods, it is necessary to change periodically. The changing cost decreases due to common design through family products.

SD wheel model:SDW-85    SDL wheel model: SDW-46



Wheel edurance test machine

## Tilt unique design increases stability

Top frame can incline up to 4°, increases stability during transportation

## Low height roller - just 55mm

Effectively contribute to decreasing in lifting up heavy load



Standard Type



Low-Floor Type

Model	Capacity	Height	Size (W)	Size (L)	Wheel No.	Wheel diameter	Weight
SD-25F	2.5ton	120mm	150mm	400mm	2 pcs	φ 85	11kg
SD-50F	5ton	120mm	238mm	400mm	4 pcs	φ 85	19kg
SDL-20F	2ton	55mm	145mm	339mm	4 pcs	φ 46	5.0kg
SDL-30F	3ton	55mm	212mm	339mm	6 pcs	φ 46	6.5kg